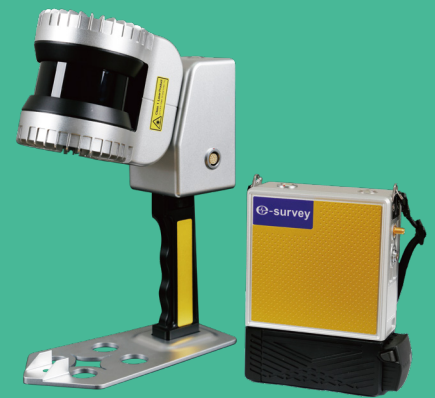


eHLS1

HANDHELD LIDAR SCANNER

The eSurvey eHLS1 is the first portable handheld laser scanner independently designed and manufactured by eSurvey GNSS. It is lightweight, flexible, and easy to operate. Adopting the new high-precision SLAM technology, it can create a 3D reconstruction of the environment indoors and outdoors without depending on GNSS positioning, and help professionals to achieve centimeter-level point cloud data while walking. With the self-researched eSCAN processing software, effective post-process of point cloud data and multiple applications of point cloud becomes possible.



Fast Scanning Speed

Its scanning speed can be up to 655,000 points per second.

Portable and Efficient

Compact and portable. Capture 3D point cloud data efficiently while moving around.

High Data Accuracy

More high-precision 3D point cloud data can be obtained, supported by the new high-precision SLAM algorithm.

Impressive Memory Storage

It is equipped with a 1T solid-state disk.

Real-Time Data Visualization

Visualize data in real time with a smartphone or tablet.

Multi-platform Supported

It can be expandable to multiple platforms, including a backpack, vehicle, intelligent robot, etc.



Website



Social media

Product Specification

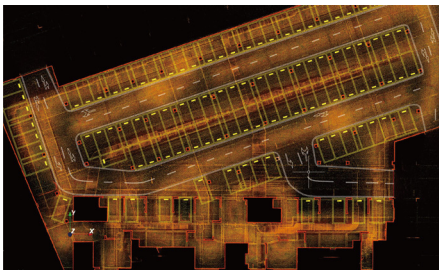
eHLS1

DESIGNED FOR ROVER STATION

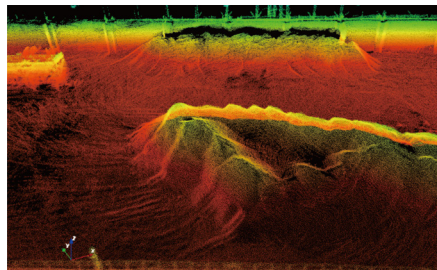


Range	120 m
Lidar channels	32 channels
Points per second	655,000
Laser product classification	Level 1
Laser wavelength	865 nm
FOV	360° x 270°
Scanning accuracy	3 - 5 cm
Data format	DAT, PCD, LAS

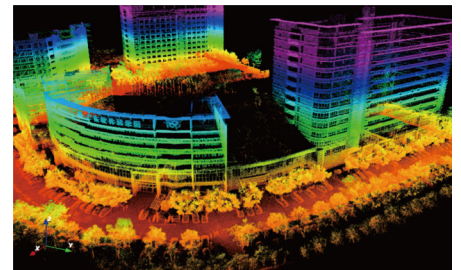
Dimension	<ul style="list-style-type: none"> ■ Handheld: 295 mm x 197 mm x 99.7 mm (with handle) ■ Host: 128 mm x 185 mm x 52 mm
Weight	<ul style="list-style-type: none"> ■ Handheld: 1.6 kg (with handle) ■ Host: 1.0 kg (without battery)
Housing	Aircraft-grade aluminum (high protection and high interference resistance)
Power supply	12 - 24 V dc/25 W
Working time	3 hours (one battery)
Storage	1T (expandable)
Working environment	Indoor and outdoor
Working temperature	-20°C - 60°C
Protection level	IP54



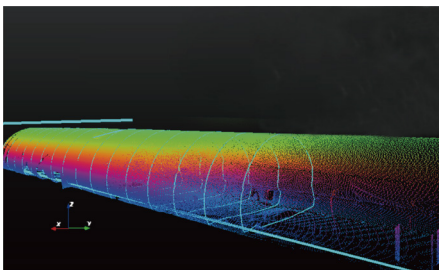
Underground Garage Survey



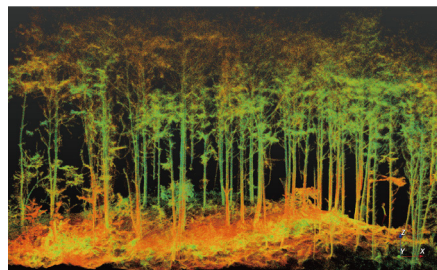
Stockpile Volume Measurement



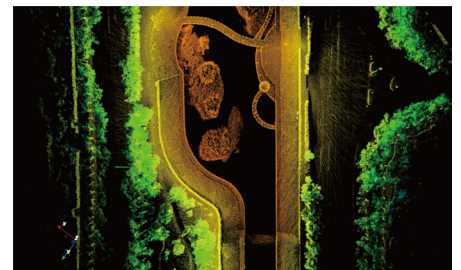
Architectural Survey



Tunnel Survey



Forestry Survey



River Survey